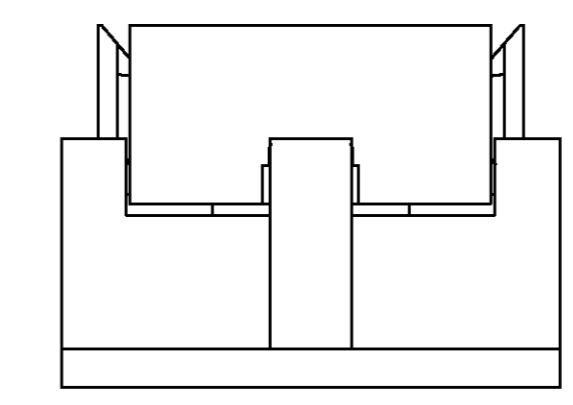
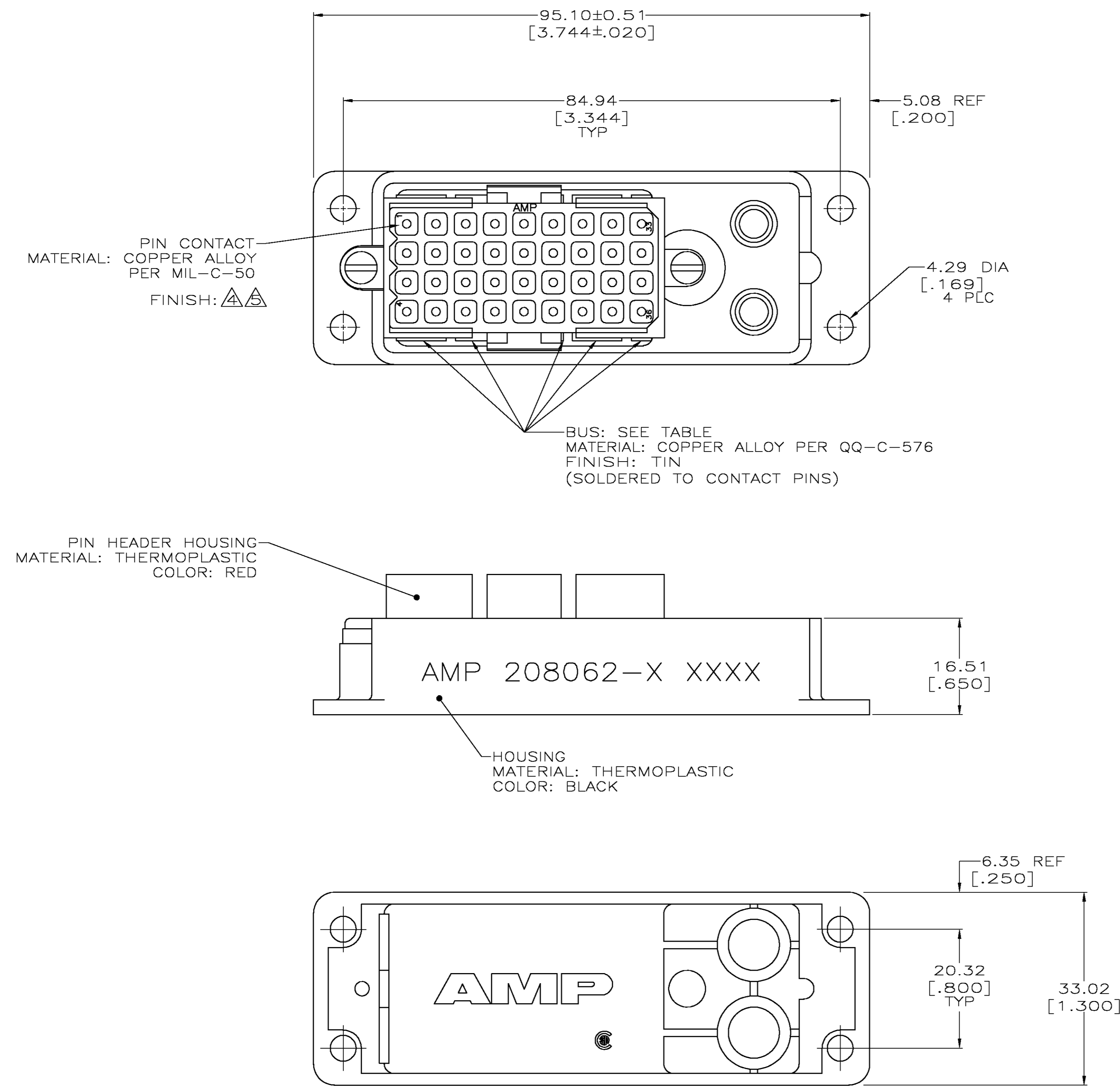


NOTES:

- MATES WITH PLUG 207019-1.
- CIRCUITS 1 THRU 8 COMMONED, 9 THRU 16 COMMONED, 17 THRU 24 COMMONED, 25 THRU 32 COMMONED AND 33 THRU 36 COMMONED TOGETHER.
- ALL CURCUITS COMMONED TOGETHER.
- TIN-LEAD OVER NICKEL PER QQ-N-290 OR COPPER PER MIL-C-14550.
- 0.76  $\mu$ m (.000030) MIN GOLD PER MIL-G-45204 FOR A LENGTH OF 5.08 (.200) FROM MATING END, 3.81  $\mu$ m (.000150) MIN TIN-LEAD PER MIL-T-10727 FOR A LENGTH OF 4.83 (.190) MIN. FROM OPPOSITE END, BOTH OVER 1.27  $\mu$ m (.000050) MIN NICKEL PER QQ-N-290.
- TIN OVER NICKEL PER QQ-N-290 OR COPPER PER MIL-C-14550.
- 0.76  $\mu$ m (.000030) MIN GOLD PER MIL-G-45204 FOR A LENGTH OF 5.08 (.200) FROM MATING END, 3.81  $\mu$ m (.000150) MIN TIN PER MIL-T-10727 FOR A LENGTH OF 4.83 (.190) MIN. FROM OPPOSITE END, BOTH OVER 1.27  $\mu$ m (.000050) MIN NICKEL PER QQ-N-290.



$\Delta$	(1) 36 POSITION $\Delta$	1-208062-1
$\Delta$	(1) 4 POSN AND (4) 8 POSN $\Delta$	1-208062-0
$\Delta$	(1) 36 POSITION $\Delta$	208062-9
$\Delta$	(1) 4 POSN AND (4) 8 POSN $\Delta$	208062-8
$\Delta$	(1) 36 POSITION $\Delta$	208062-7
$\Delta$	(1) 4 POSN AND (4) 8 POSN $\Delta$	208062-6
$\Delta$	(1) 36 POSITION $\Delta$	208062-3
$\Delta$	(1) 4 POSN AND (4) 8 POSN $\Delta$	208062-1
FINISH	BUS TYPE	PART NO.

THIS DRAWING IS A CONTROLLED DOCUMENT. DIM: D.GELTZ 06/13/92  
 OR: R.STONE 9-21-92  
 Tyco Electronics Corporation Harrisburg, Pa 17105-3608

DIMENSIONS: mm [INCHES]	TOLERANCES UNLESS OTHERWISE SPECIFIED:	PRODUCT SPEC	NAME
0 PLC ± -	1 PLC ± -	APPLICATION SPEC	COMMONING DEVICE ASSEMBLY, 36 POSITION, METRIMATE
2 PLC ± 0.25[.010]	3 PLC ± -	WEIGHT	SIZE CAGE CODE DRAWING NO
4 PLC ± -	ANGLES ± -	FINISH SEE CALLOUTS	A1 00779 C=208062
MATERIAL SEE CALLOUTS	FINISH SEE CALLOUTS	CUSTOMER DRAWING	RESTRICTED TO
		SCALE 2:1	SHEET 1 OF 1 REV H